

Exploration and Production On-Line

Cost-effective and convenient training program

THE NExT EDGE

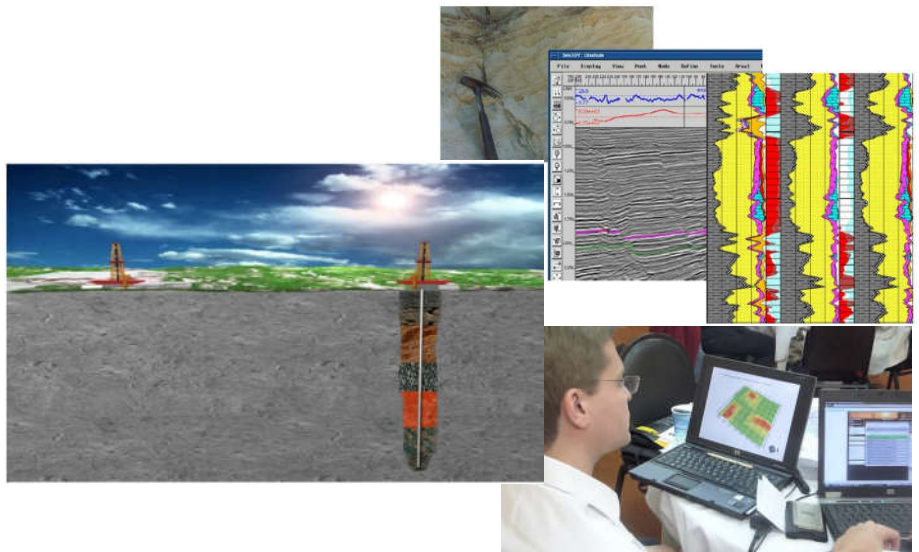
- Full suite of training courses in upstream disciplines as well as surface facility and midstream instruction
- Training on industry-leading software tools and certification
- More than 3,000 independent instructors, with a wide variety of technical and regional experience
- Access to a global network of Schlumberger training centers
- Recognized as the 2013, 2014, and 2015 Getenergy Education and Training Provider of the Year
- Won Getenergy's Localization Award in 2016

ABOUT NExT

With a portfolio of more than 600 expert-led practical courses, training programs, and competency services, NExT helps more than 15,000 E&P professional each year in more than 50 countries develop the petrotechnical expertise needed to meet today's increasingly complex industry challenges. By combining expert-led courses, in-class projects customized for your asset challenges, field and laboratory courses that provide hands-on learning experiences, industry-leading software tools, and one-on-one mentoring, NExT training helps teams and individuals align their abilities to strategic objectives.

ELearning reduces time away from the workplace, eliminates the need for travel, and moderates the need for classroom-based training. Using eLearning, you can have the freedom to learn at your own convenience, and at a pace that is right for you. Staff can be trained in remote locations and in a consistent fashion as anyone receiving on-site training.

NExT's Exploration and Production eLearning module combines multimedia and instructional design and offers a very rich learning experience. The 20 hour module available on-line describes the lifecycle of the reservoir from formation of the hydrocarbons to how that oil and/or gas is trapped in the reservoir to exploration process, followed by the reservoir appraisal, development planning and execution of that plan and finally production operations. It is an excellent introduction to the upstream petroleum industry.



Key Learning Elements

- **People** - involved personnel and their functions in the oil and gas business.
- **Life Cycle** - various phases of the oil and gas industry.
- **Technologies** - exposure to enabling technologies and processes for successful exploitation of the non-renewable hydrocarbon resources.
- **Social, environmental and financial** aspects of the oil and gas business.